

Inside the EA Exam

Fast-track your admissions process and close
the yield gap



Agenda

- Introduction to GMAC
- What is the EA exam?
- Performance outcomes
- Sample questions
- Q&A



Inside the EA Exam

Introduction to GMAC

Who we are

GMAC is a **global nonprofit association** of leading graduate **business** schools.

We are dedicated to **connecting** future business leaders with educational opportunities.



Connecting business ambition to opportunity



Our vision

A world where every talented person can benefit from the best business education **for them.**



Our mission

Provide the tools and information necessary for schools and talent to discover and evaluate **each other.**

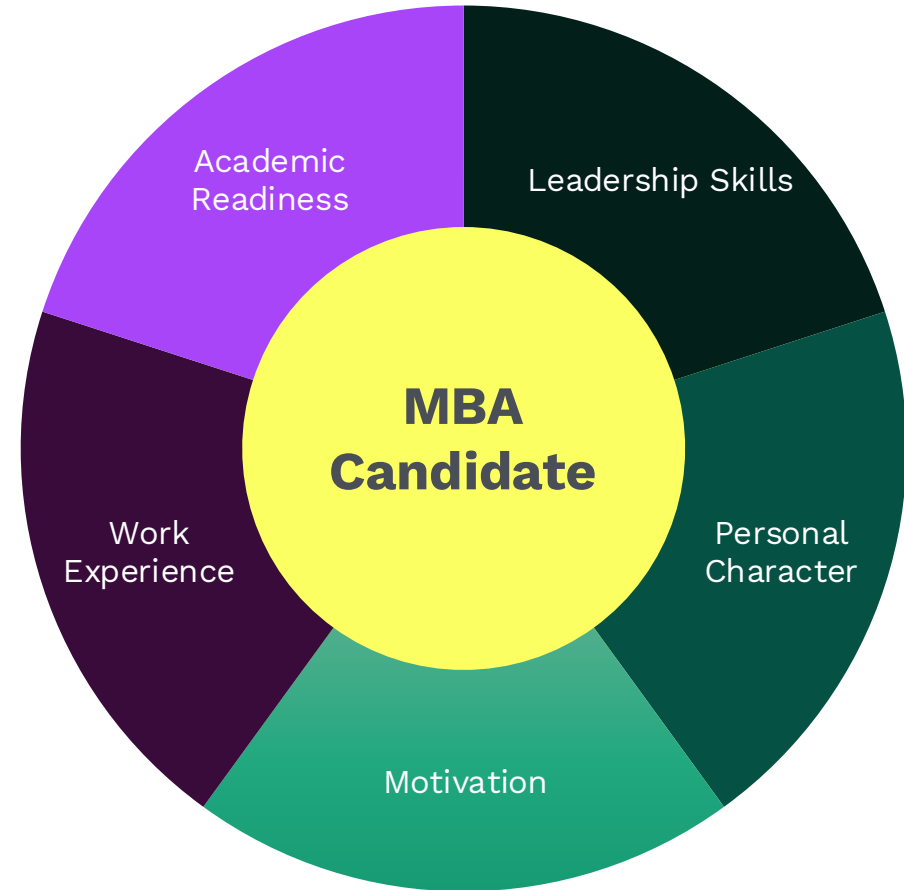


Our purpose

To ensure talent never goes **undiscovered.**

The holistic evaluation process

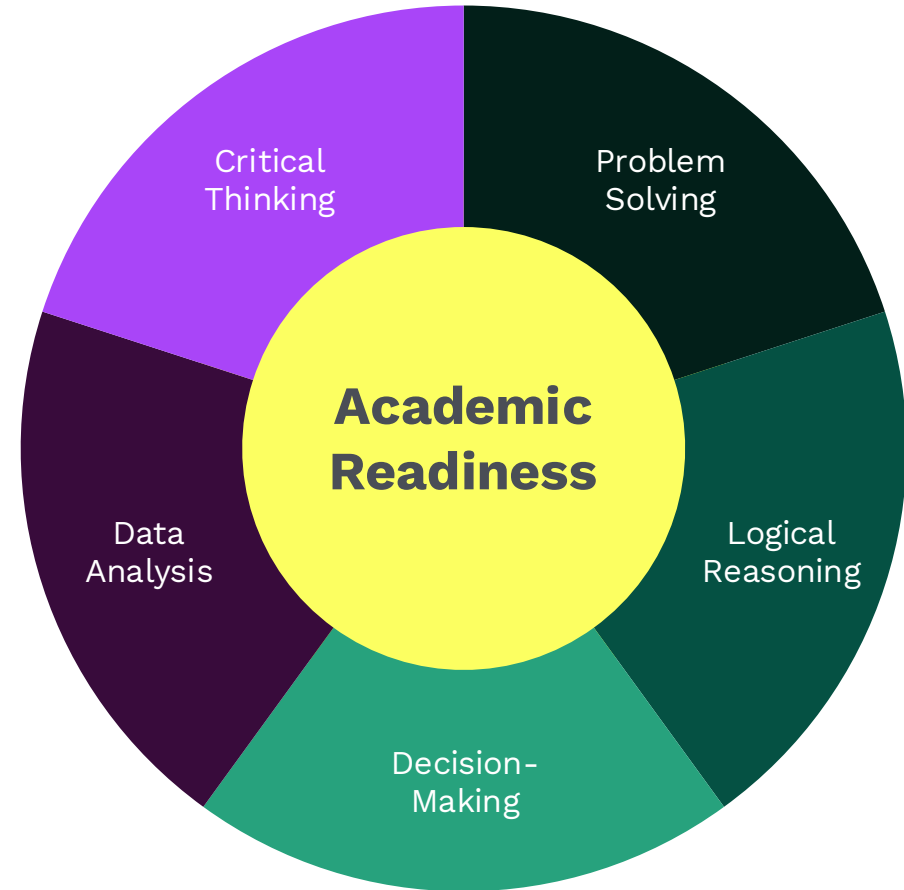
- The business-school application process considers a **range of candidate attributes**.
- Components—such as essays and letters of recommendation—offer valuable insight into **soft skills and intangible qualities**.
- GMAC assessments provide **a reliable measure of academic readiness** and can help **surface standout candidates who possess:**
 - Logical & creative problem solving
 - Critical thinking and reading
 - Data literacy and information analysis



GMAC assessments uniquely help schools

Assessments developed by GMAC provide:

- **Unbiased, objective data points** within your holistic admissions process, ensuring **rigor and fairness** across applicant types.
- Reflects **input from faculty, deans, and admissions leaders**, aligning both exams with the **skills and qualities schools value** most in successful students.
- Strong, scientific psychometric foundation, ensuring **reliability, validity, and relevance** to the business classroom and beyond.
- Brand strength by **signaling a candidate-first approach** that recognizes diverse strengths and paths to readiness.
- **Flexibility for admissions teams** to determine the most appropriate path for each candidate while maintaining **consistent evaluation criteria**.



Build your best class with GMAC



 GMAT Exam

Differentiate Top Talent

The gold-standard assessment for distinguishing highly capable applicants in competitive and academically rigorous programs.

 Executive Assessment

Assess Readiness

A flexible, academically grounded readiness indicator that enables you to expand your applicant pool while maintaining high standards.

 Business Fundamentals
POWERED BY 

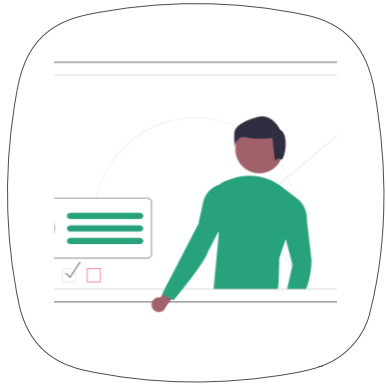
Prepare & Level-Set

Self-paced courses that help ensure students are prepared to engage at the level your curriculum demands, before classes begin.

Inside the EA Exam

What is the EA Exam?

Built for the modern b-school candidate



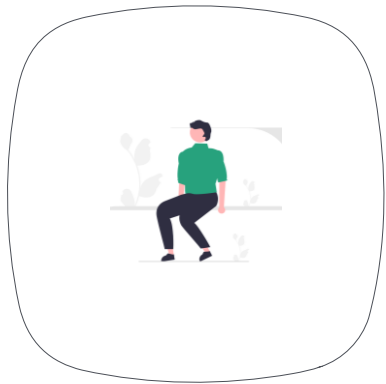
Quality

- Designed with business schools
- High reliability and validity



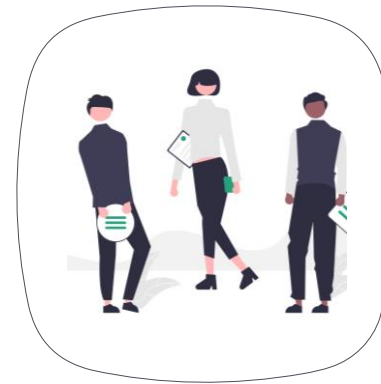
Convenience

- Short (90 mins.)
- Minimal prep
- Available at test centers or online



Relevance

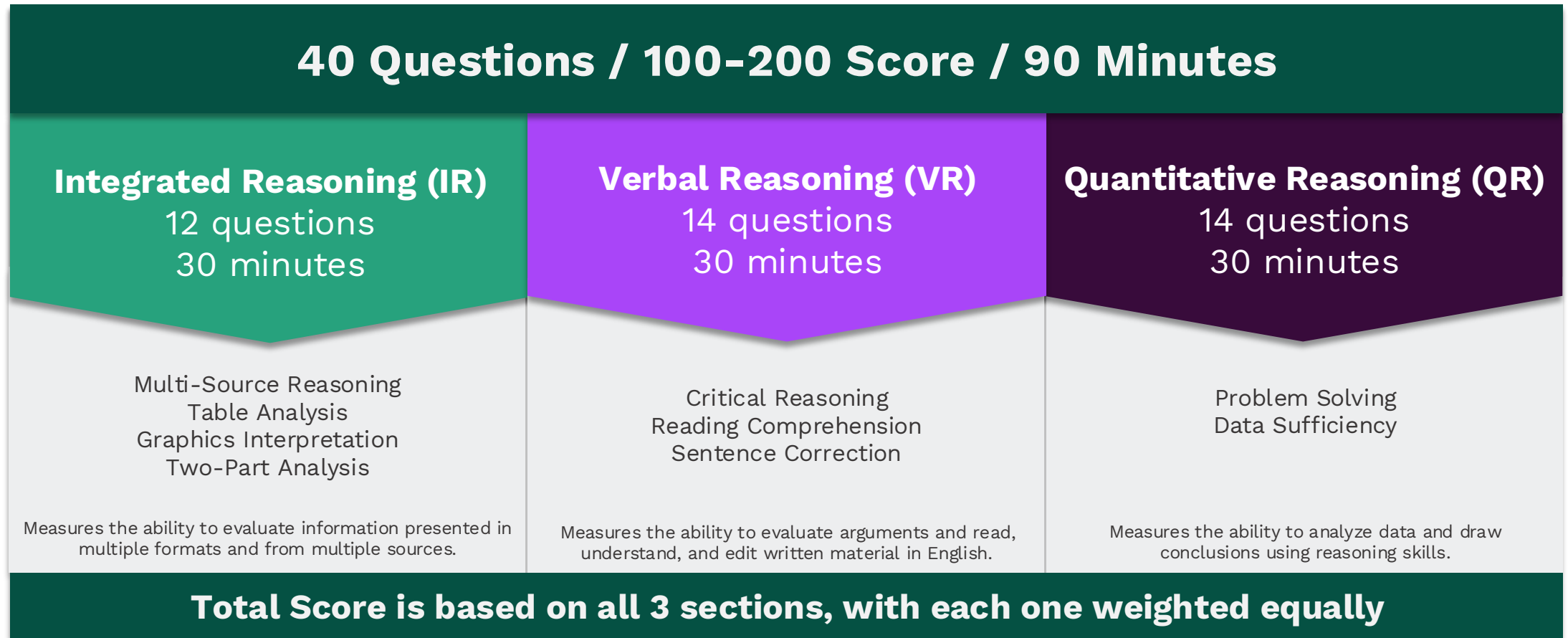
- Content is b-school and business-relevant
- Adapts to candidate ability
- Confirms b-school readiness



Flexible

- Unlimited score sending
- Appointments 24/365
- Unlimited rescheduling
- No rescheduling fees*
- Readiness vs. screening tool (ex. GMAT)

Structured for efficiency

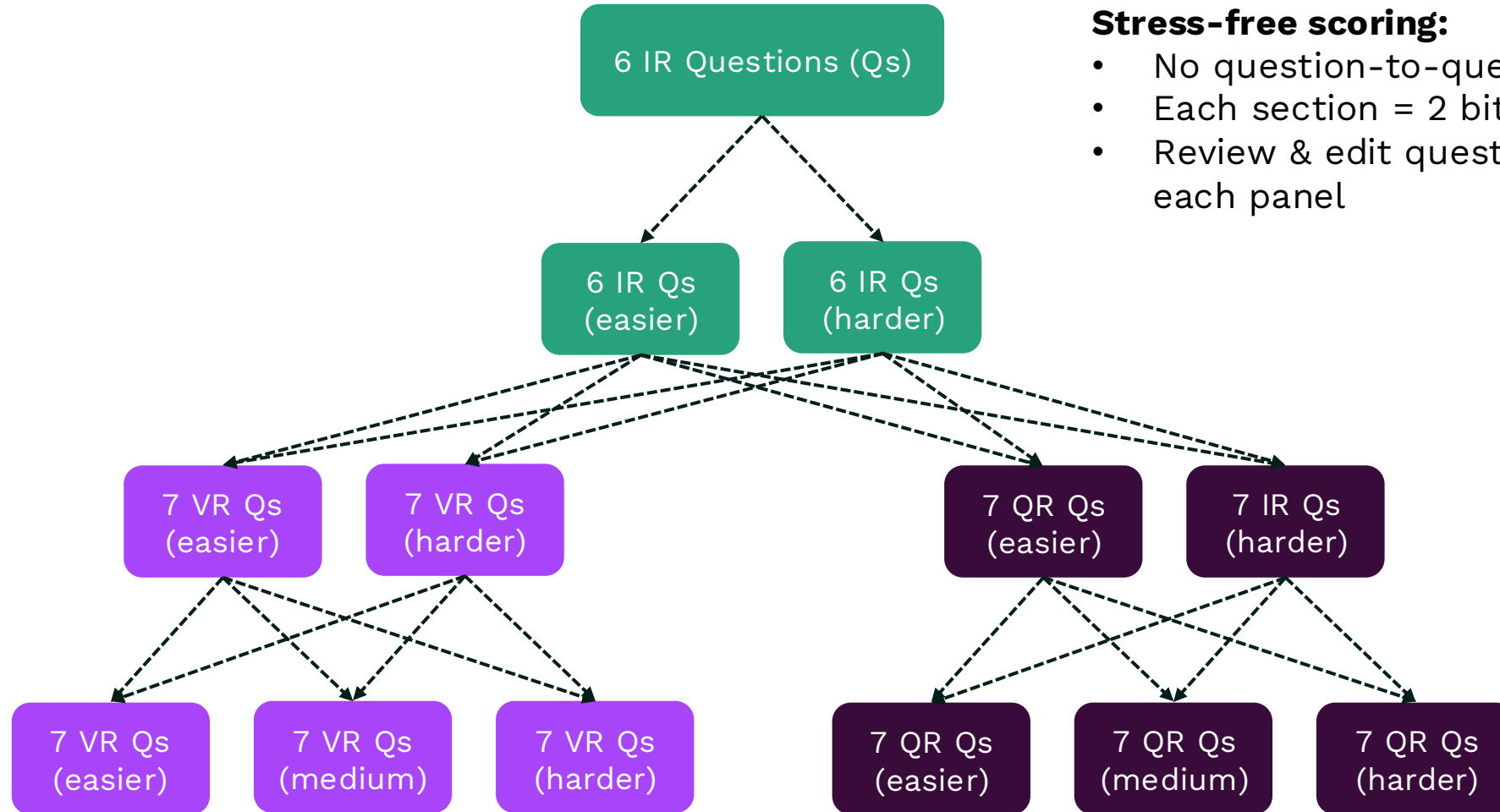


Content Comparison: EA and GMAT

EA Exam: 40 Questions / 100-200 Score / 90 Minutes		
Integrated Reasoning (IR) 12 questions 30 minutes	Verbal Reasoning (VR) 14 questions 30 minutes	Quantitative Reasoning (QR) 14 questions 30 minutes
Multi-Source Reasoning Table Analysis Graphics Interpretation Two-Part Analysis	Critical Reasoning Reading Comprehension Sentence Correction	Problem Solving Data Sufficiency

GMAT Exam: 64 Questions / 205-805 Score / 2 Hours 15 Minutes		
Data Insights (DI) 20 questions 45 minutes	Verbal Reasoning (VR) 23 questions 45 minutes	Quantitative Reasoning (QR) 21 questions 45 minutes
Multi-Source Reasoning Table Analysis Graphics Interpretation Two-Part Analysis Data Sufficiency	Critical Reasoning Reading Comprehension Sentence Correction	Problem Solving Data Sufficiency

Section adaptive design



Stress-free scoring:

- No question-to-question concern
- Each section = 2 bite-sized panels
- Review & edit questions between each panel

What is the EA?

Accepting schools

Americas

Africa, Asia, and Oceania



Europe



What is the EA?

Full-time MBA programs

50% EA test-takers applied to full-time MBA programs in 2025.

Americas

Africa, Asia, and Oceania



Europe



What is the EA?

EA accepting programs

Executive MBA	Part-Time MBA	Full-Time MBA	Online MBA	Non-MBA Masters & PhD	
<p>AMERICAS</p> <p>Case Western Reserve Chapman College of Charleston Columbia Concordia-Canada Cornell CUNY Baruch Duke Emory Fordham Fundacao Getulio Vargas Georgetown-McDonough Hofstra Howard IESE - New York MIT Northwestern NYU Ohio State</p> <p>EUROPE</p> <p>City St. George's U. London Copenhagen EDHEC Erasmus ESADE ESMT Berlin ESSEC HEC Paris IE IESE</p> <p>AFRICA, ASIA, & OCEANIA</p> <p>American-Dubai Asia School of Business Asian Inst. of Mgmt. CEIBS Hult</p>	<p>Queens Rice Rutgers Santa Clara Seattle Southern Methodist SUNY Binghamton Tecnologico de Monterrey Texas Christian U. Alberta U. Calgary U. California-Berkeley U. California-Irvine U. California-Los Angeles U. California-San Diego U. Chicago U. Colorado-Boulder U. Georgia U. Hawaii at Manao</p> <p>U. Houston U. Iowa U. Michigan-Ann Arbor U. Minnesota-Twin Cities U. Nevada, Las Vegas U. North Carolina-Chapel Hill U. Notre Dame U. Pennsylvania U. San Francisco U. Texas-Austin U. Toledo U. Virginia-Darden U. Washington-Seattle U. Wisconsin-Madison Vanderbilt Villanova Yale York</p> <p>U. Cambridge U. Catolica Portuguesa U. Manchester U. NOVA de Lisboa U. Oxford U. St. Gallen Vlerick WHU WU - Vienna</p> <p>Sabancı Singapore Management Tsinghua U. Chicago U. Hong Kong</p>	<p>AMERICAS</p> <p>Belmont Bentley Carnegie Mellon Case Western Reserve CUNY-Baruch Emory Fordham George Mason Georgetown-McDonough Georgia Inst. Tech. Iowa State Northwestern NYU Ohio State Oregon State Portland State Rice Rutgers Southern Methodist</p> <p>Tecnologico de Monterrey Texas Christian U. California-Berkeley U. California-Los Angeles U. California-Riverside U. California-San Diego U. Chicago U. Georgia U. Houston U. Michigan U. Minnesota-Twin Cities U. Oklahoma U. Pittsburgh U. San Diego U. Texas-Austin U. Victoria U. Virginia-Darden U. Washington-Seattle U. Wisconsin-Madison Valparaiso</p> <p>U. Manchester U. St. Gallen WU-Vienna</p> <p>AFRICA, ASIA, & OCEANIA</p> <p>CEIBS Fudan/BI Norwegian Fudan/U. Hong Kong Nanyang Technological National U. of Singapore</p> <p>S.P. Jain Inst. of Mgmt. Chinese U. of Hong Kong U. Cape Town U. Hong Kong</p>	<p>AMERICAS</p> <p>Belmont Bentley Carnegie Mellon Columbia Consortium of Grad Study CUNY-Baruch Duke Fordham Georgetown-McDonough Michigan State MIT (Sloan Fellows) NYU Rice Rutgers Southern Methodist</p> <p>Southern Methodist Tecnologico de Monterrey U. California-Los Angeles U. California-Riverside U. Georgia U. Houston U. Miami U. Michigan (Global MBA) U. Rochester U. Texas-Austin U. Toledo U. Virginia-Darden Valparaiso Vanderbilt Western</p> <p>Reutlingen U. Amsterdam U. St. Gallen</p> <p>AFRICA, ASIA, & OCEANIA</p> <p>Asian Inst. of Mgmt. Great Lakes Inst. of Mgmt. Hult IIM-Ahmedabad-Dubai</p> <p>NYU Abu Dhabi S.P. Jain Inst. of Mgmt. U. Cape Town</p>	<p>AMERICAS</p> <p>Bentley Carnegie Mellon CUNY Baruch Ohio State Oregon State Quantic Rice Southern Methodist Tecnologico de Monterrey U. Denver U. Georgia U. Houston U. Kansas U. Michigan U. Minnesota-Twin Cities U. Southern California Valparaiso</p> <p>EUROPE</p> <p>ESMT Berlin IE Imperial College London Vlerick</p> <p>AFRICA, ASIA, & OCEANIA</p> <p>Asian Inst. of Mgmt. Hult</p>	<p>AMERICAS</p> <p>Arizona State-Thunderbird Belmont Bentley Cornell CUNY Baruch Duke Georgetown-Arts & Sciences Georgetown-McDonough NYU Stanford Texas Christian U. California-Riverside U. Houston U. Toledo U. Virginia-McIntire</p> <p>EUROPE</p> <p>London Business School Mararyk Vlerick</p> <p>AFRICA, ASIA, & OCEANIA</p> <p>Asian Inst. of Mgmt. Hult INSEAD Sabanci</p>

What is the EA?

Full-time MBA programs

 MICHIGAN ROSS

 NYU STERN

 Carnegie Mellon University
Tepper School of Business

 UCLA Anderson
School of Management

 DUKE
FUQUA
SCHOOL OF BUSINESS

 TEXAS McCombs
The University of Texas at Austin
McCombs School of Business

 SIMON
BUSINESS SCHOOL
UNIVERSITY OF ROCHESTER

 FORDHAM
THE JESUIT UNIVERSITY OF NEW YORK
Gabelli School
of Business

 HEC
PARIS

 RUTGERS
Rutgers Business School
Newark and New Brunswick

 THE
CONSORTIUM

 ESB
BUSINESS SCHOOL



 Columbia
Business
School

 RICE BUSINESS
Jones Graduate School of Business

 ESMT
BERLIN


 SMU COX
SCHOOL OF BUSINESS

 GEORGETOWN
UNIVERSITY
McDonough
SCHOOL OF BUSINESS

 BENTLEY UNIVERSITY

 VANDERBILT
Owen Graduate School of Management

 جامعة نيويورك أبوظبي ستيرن
NYU STERN
ABU DHABI

 C. T. Bauer College of Business
UNIVERSITY OF HOUSTON

 UNIVERSITY
of VIRGINIA
DARDEN SCHOOL
of BUSINESS

 DARDEN SCHOOL
of BUSINESS

 MICHIGAN STATE UNIVERSITY
BROAD COLLEGE of BUSINESS

 Baruch COLLEGE
ZICKLIN
SCHOOL OF
BUSINESS

 ESSEC
BUSINESS SCHOOL

 UC RIVERSIDE
School of Business

 University of St. Gallen

 HULT

 MIT
MANAGEMENT
SLOAN SCHOOL

 ASIAN
INSTITUTE OF
MANAGEMENT

 VALPARAISO UNIVERSITY
MBA

 IIMA
विद्याविनियोगाहिकामः

 BELMONT UNIVERSITY
MASSEY
GRADUATE SCHOOL of BUSINESS

 GREAT LAKES
INSTITUTE OF MANAGEMENT, CHENNAI
Global Mindset - Indian Roots

 QUANTIC
SCHOOL of
BUSINESS &
TECHNOLOGY

 MIAMI HERBERT
BUSINESS SCHOOL

 COLLEGE of BUSINESS
AND INNOVATION
THE UNIVERSITY OF TOLEDO

 UNIVERSITY OF
GEORGIA
Terry College of Business

 EDHEC
BUSINESS SCHOOL

 IVEY

 SPJIMR
Bharatiya Vidya Bhavan

 Graduate School
of BUSINESS
UNIVERSITY OF CAPE TOWN

 AMSTERDAM
BUSINESS
SCHOOL
Business

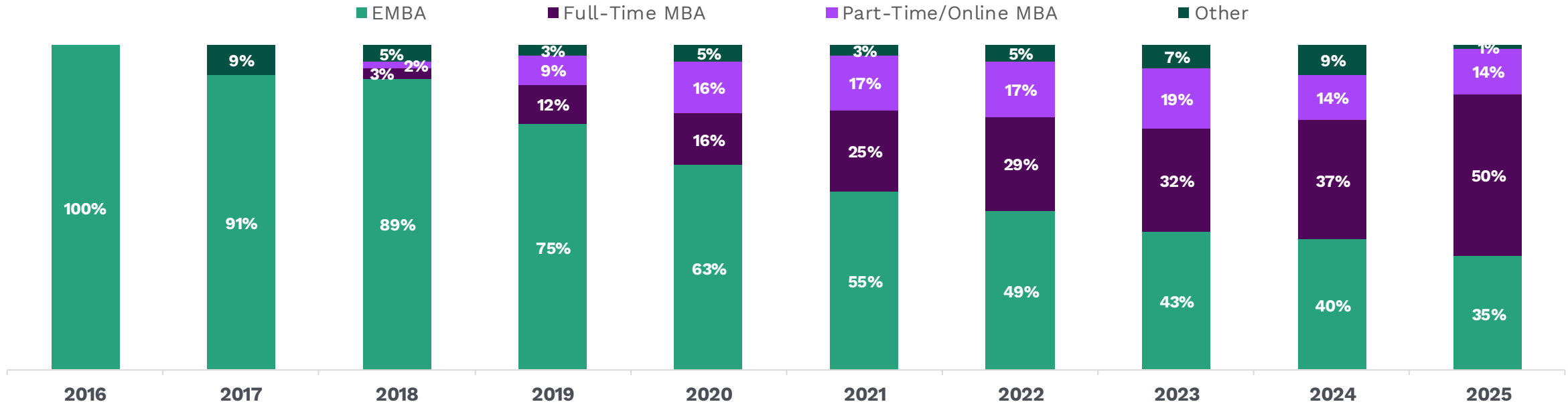
 EGADE Business School
Tecnológico de Monterrey

Evolution of program mix

Download full list:



EA Score Reports by Program Type



EA launches with EMBA pilot programs

7 schools
21 programs

EA adoption by EMBA and Exec. MS. programs continues to grow rapidly

85 schools
170 programs

EA adoption by PTMBA & FTMBA programs begins mostly by current EA-using schools

EA adoption across program types continues

136 schools
324 programs

The best-kept secret in GME

“Candidates respond with visible relief when they learn about the EA.” – Georgetown McDonough



Purpose	Readiness exam	Readiness exam	Selection exam
Duration	90 mins. ✓	120 mins.	135 mins.
Exam content	3 sections ✓ 40 questions ✓ No essay ✓	5 sections 55 questions 1 essay	3 sections 64 questions No essay
Score delivery	24 hours ✓	7-10 days	3-5 days
Time per question	2.25 mins. ✓	1.6 mins.	2 mins.
Exam fees	\$350 (includes unlimited score sending and rescheduling) ✓	\$220 (does not include unlimited score sending or rescheduling)	\$275-\$310 (does not include unlimited score sending or rescheduling)
Prep fees	\$195 prep bundle ✓	\$249 prep bundle	\$299 prep bundle

The EA is **easier to take** and **faster to prep for** while meeting the **high-quality** of a GMAC exam.

Better admissions outcomes

1. Increased applicants and conversion rates
2. More diverse applicant pool
3. Accelerated application process
4. Waiver alternative
5. Attractive GRE & GMAT alternative

“Test burden is one of the biggest obstacles. The EA exam meaningfully reduces that.” – NYU Stern

GMAC Executive Assessment

Inside the Executive Assessment

The assessment measures reasoning skills and helps schools determine a candidate's program readiness in 3 short sections.

Section	Questions	Time
Integrated Reasoning Integrated Reasoning measures the ability to evaluate information presented in multiple formats and from multiple sources. These skills are necessary to succeed in our data-driven world.	12 Questions • Multi-Source Reasoning • Graphics Interpretation • Two-Part Analysis • Table Analysis	30 Minutes
Verbal Reasoning Verbal Reasoning measures the ability to evaluate arguments and read, understand, and edit written material using standard English.	14 Questions • Reading Comprehension • Critical Reasoning • Sentence Correction	30 Minutes
Quantitative Reasoning Quantitative Reasoning measures the ability to analyze data and draw conclusions using reasoning skills. The math skills required for this section are at a secondary school level.	14 Questions • Data Sufficiency • Problem Solving	30 Minutes

Assessment Totals: 40 Questions / 90 min / Score: 100-200

5 Admissions Outcomes

1. Increased applicants & conversion rates
2. More diverse applicant pool
3. Waiver alternative
4. Attractive GRE™ & GMAT™ alternative
5. Accelerated application process

By the numbers

- 6k+** Registrations worldwide each year
- 100+** Countries where candidates have taken the exam
- 75%** Candidates said acceptance of the assessment factored into where to apply

66 “This assessment designed for busy candidates is exactly what we’ve wanted...[and] has achieved a great combination of accountability and flexibility.”
— Morris Hu, Admissions Manager China Europe International

- High Quality**
Exam scores highly correlated to classroom performance.
- Readiness**
Focuses on helping you assess candidate ability + skill level (not necessarily on screening candidates out).
- Reduced Prep Time**
Requires minimum prep time and enables candidates to submit their scores to your institution at no cost.
- Relevance**
Designed specifically for the busy professional based on skills candidates use every day.
- Pipeline Insight**
Taking the assessment will allow candidates to demonstrate their commitment to your program and help you gain earlier visibility into your pipeline.

Don't risk losing a good candidate.
Learn more: gmac.com/executive-assessment/schools

Learn more:



What is the EA?

EA Official Prep

EA Official Prep resources include:

- 4 full-length practice exams
- 300 practice questions across all 3 sections
- 50 additional IR practice questions

Based on a recent EA test taker survey:

- **75%** of respondents used *EA Official Prep* materials to prepare
- **95%** of *EA Official Prep* users felt “mostly” or “fully” prepared for the actual EA
- **36%** are spending **less than 2 weeks preparing**



64% EA test-takers spend 4 weeks or less preparing for their exam.

Free EA prep



Questions Sampler

Take the first step towards your EA preparation journey with our 9 free sample questions that help you get familiar with the question types included on the assessment.*

Try sample questions:



**free mba.com account required*



4-Week Study Planner

Get our self-guided, step-by-step worksheet to help you prepare for the EA exam in as little as 4 weeks with exclusive preparation prep recommendations, tips and tools, & progress tracker!

Download study planner:

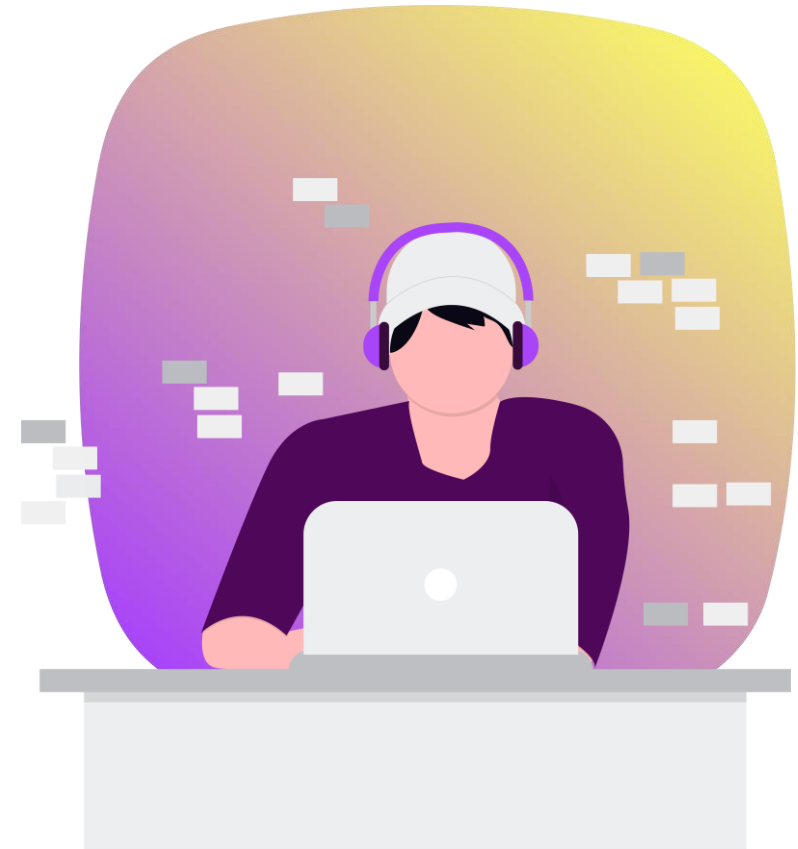


Accommodations

To make the EA exam broadly accessible, accommodations are available for EA test takers who meet certain eligibility criteria and properly document their request.

Available accommodations include:

- Extended testing time
- Additional break time
- Assistive technology
- Access to person medical devices and other resources



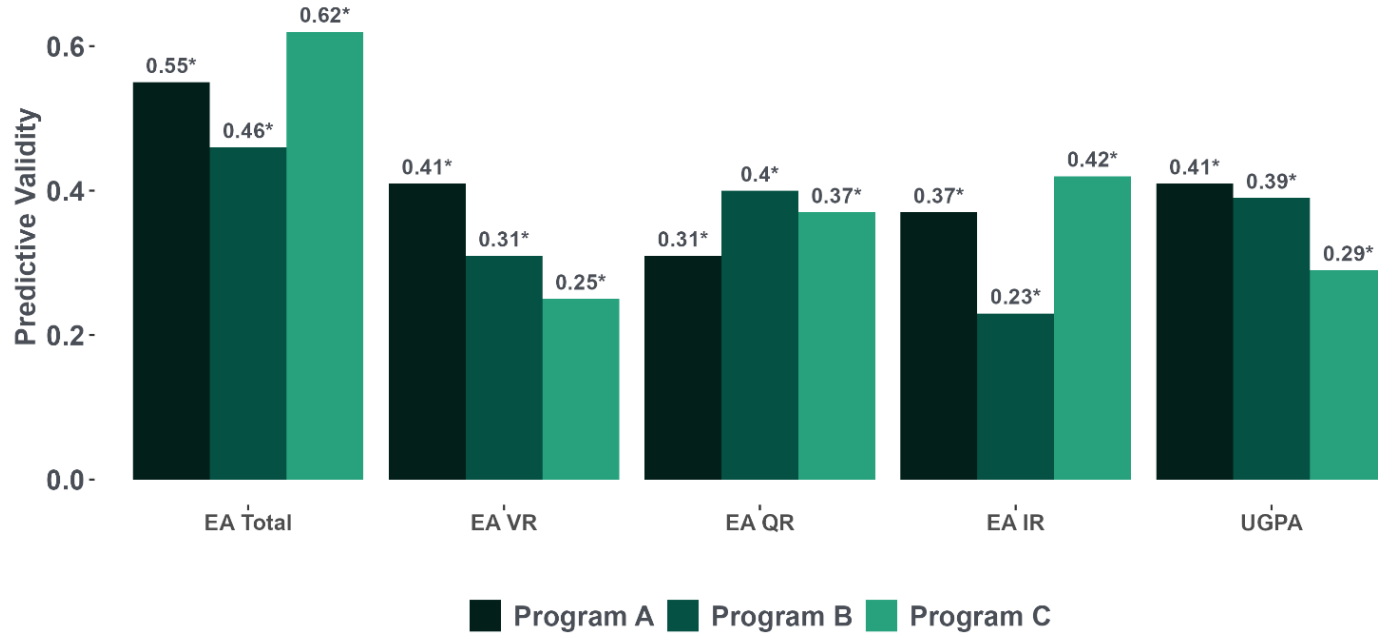
Learn more:



Inside the EA Exam

Performance Outcomes

EA Outperforms UGPA & Improves It When Combined



Among three full-time programs (two MBA and one master of management), the EA Total score, comprising the three section scores, consistently had the **highest predictive value** among the section scores and UGPA.

Note: * indicates the correlation is statistically significantly greater than 0 ($p < 0.05$)

	Predictive Validity Score (R)		
	Program A	Program B	Program C
UGPA	0.38	0.35	0.26
UGPA+Total	0.51	0.55	0.52
UGPA+VR+QR+IR	0.51	0.57	0.54

The results show that combining EA scores (either the Total score or the VR, QR, and IR scores) with UGPA substantially improved predictive validity relative to UGPA alone across all three programs.



Scan to read the full study

Note: R (the square root of R^2) was used for evaluating the increment validity.

Why EA Scores Belong in Your Admissions Decision

1

EA scores are valid predictors of academic performance

Across three different Full-time programs and 750+ students, EA scores consistently correlated with how well students performed in their programs.

2

GPA tells part of the story. EA completes it.

Undergraduate GPA only demonstrates past academic performance. EA signals how a student will perform once they're in your program.

3

The combined model is your strongest tool

Using GPA and EA section scores together boosted predictive accuracy by 34–100% depending on the program. That significantly improves your odds in choosing students who'll thrive academically.

4

Section scores add nuance beyond the Total

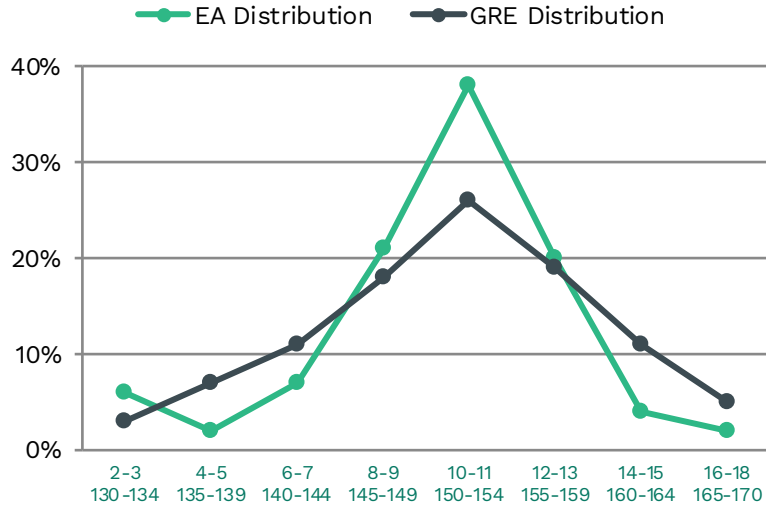
For ~60% of the candidates, using all three section scores (VR, QR, IR) individually outperformed the Total score alone.

More Relevant than the GRE

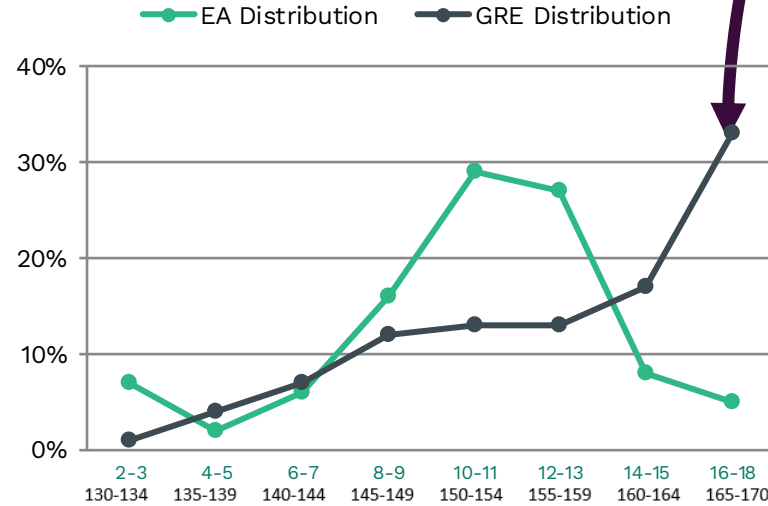


Over 1/3 of GRE test takers get a perfect/near-perfect Quant score.

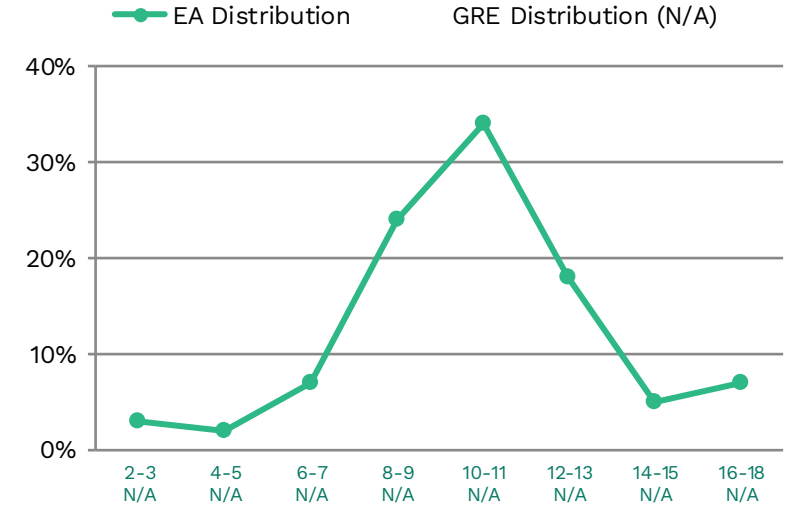
Verbal: EA vs GRE



Quant: EA vs GRE



Integrated Reasoning: EA vs GRE



- EA provides strong discriminating power (bell-shaped curve).
- EA test takers are highly motivated and represent serious candidates for all graduate management education (GME) programs. Over half of EA scores are sent to full-time MBA programs.
- GRE scores are less representative of the GME applicant pool and less predictive of business school performance.
- No Integrated Reasoning (IR) Section in GRE results in lack of insight into a candidate’s data/AI literacy or ability to derive business insights—skills that are critical in modern management education and industries.

EA performance

Total Score (Scale 100-200)

Average	25 th %	Median	75 th %
150.6	146	151	155

Sub-scores (Scale 0-20)

IR	VR	QR
10.4	9.8	10.4

Notes:

- January 1, 2025 - December 31, 2025
- Total Score Scale: 100 – 200; current possible low score is 126; current possible high score is 174
- Sections Score Scale: 0-20; current possible low score is 2; current possible high score is 18



Performance by program type

“We see no difference in academic performance between EA and GMAT/GRE admits.” – HEC Paris

Executive MBA programs

Total Score
(Scale 100-200)

25 th %	Median	75 th %
147	152	156

Sub-scores
(Scale 0-20)

Section	25 th %	Median	75 th %
VR	9	10	12
QR	9	11	12
IR	9	11	12

Full-time MBA programs

Total Score
(Scale 100-200)

25 th %	Median	75 th %
149	153	157

Sub-scores
(Scale 0-20)

Section	25 th %	Median	75 th %
VR	9	10	12
QR	10	12	13
IR	9	11	13

Part-time MBA programs

Total Score
(Scale 100-200)

25 th %	Median	75 th %
145	150	154

Sub-scores
(Scale 0-20)

Section	25 th %	Median	75 th %
VR	8	10	11
QR	8	10	12
IR	8	10	12

Notes:

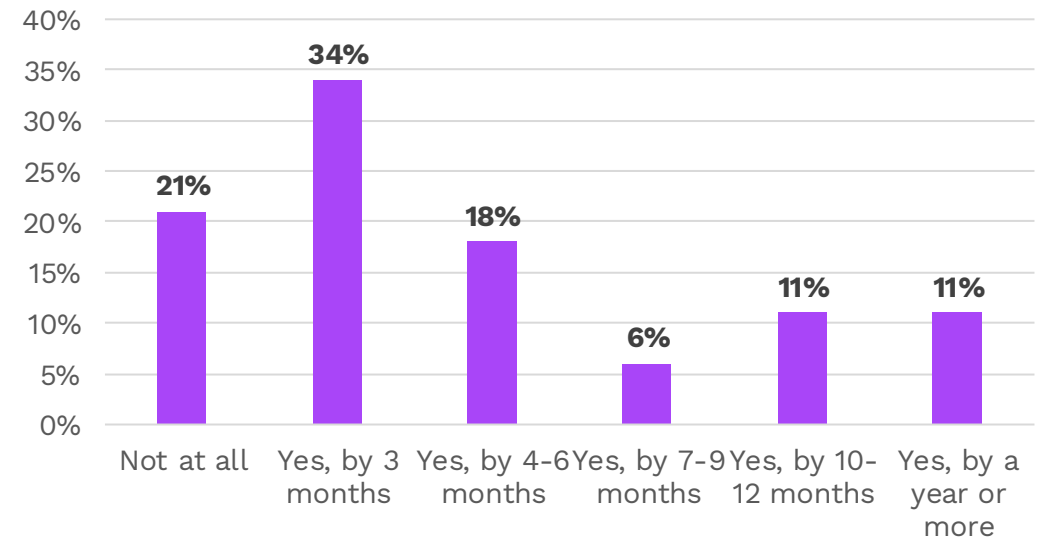
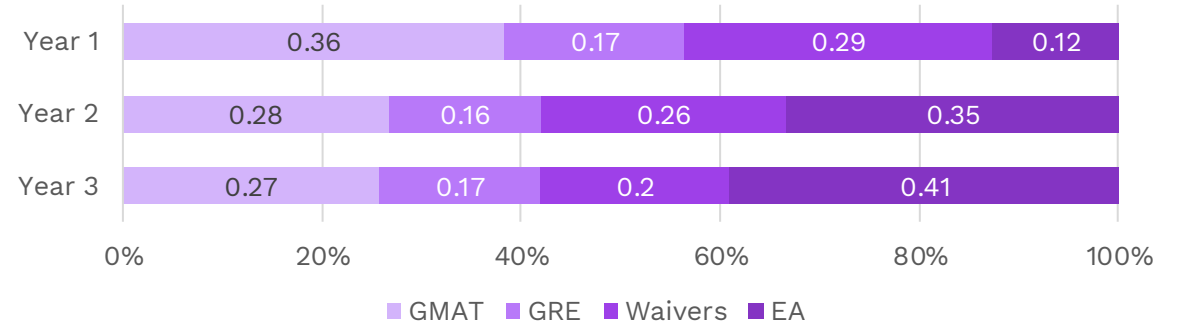
- January 1, 2025 - December 31, 2025
- Total Score Scale: 100 – 200; current possible low score is 126; current possible high score is 174
- Sections Score Scale: 0-20; current possible low score is 2; current possible high score is 18

Proven admissions outcomes

The EA has:

1. Offered an **attractive alternative** to the GMAT and GRE
2. Driven **pipeline growth** and program **enrollment rates**
3. Expanded **applicant diversity**
4. Accelerated the application process **by 3+ months**

UVA Darden - Available Testing Options



“I would have delayed my application if I had to take the GMAT/GRE instead of the Executive Assessment.”



Inside the EA exam

Candidate Profiles

EA Candidate Profiles

View **mean EA scores and candidate age** by region. Use these profiles to understand who is applying to your program and benchmark your incoming class.

- **Global**
- **US**
- **China**
- **Europe**



Download all four regional profiles:



Inside the EA Exam

Sample questions

Integrated reasoning

Multi-source reasoning

Test takers are asked to use text, charts, and/or tables from two to three sources of information to answer questions.

Calculator

Email #1
Email #2
Email #3

Email from **administrator** to research staff

January 15, 10:46 a.m.

Yesterday was the deadline for our receipt of completed surveys from doctors who were invited to participate in the Medical Practice Priorities Survey. Did we get enough returns from this original group of invitees to get reliable statistics? Do we need to invite additional participants?

Consider each of the following statements. Does the information in the three emails support the inference as stated?

	Yes	No	
<input type="radio"/> <input type="radio"/>			The administrator is unwilling to invite as many participants in the second group as were invited in the first group.
<input type="radio"/> <input type="radio"/>			The project coordinator does not expect to be able to meet the goal for numbers of completed surveys received.
<input type="radio"/> <input type="radio"/>			The administrator is willing to accept some risk of exceeding the budget for compensating participants.

Table analysis

Test takers are presented with a sortable table of information, which must be analyzed to determine if answer statements are accurate.

Calculator

Sort By: Airport City

City	Airport			Passengers			Movements		
	Country	Code	Number	% change	Rank	Number	% change	Rank	
Amsterdam	NLD	AMS	47,430,019	-0.8	14	446,592	-1.7	17	
Atlanta	USA	ATL	90,039,280	0.7	1	978,824	-1.6	1	
Beijing	CHN	PEK	55,937,289	4.4	8	431,670	8.0	21	
Charlotte	USA	CLT	34,739,020	4.7	26	536,253	2.6	9	
Chicago	USA	ORD	69,353,876	-9.0	2	881,566	-4.9	2	
Dallas/Ft Worth	USA	DFW	57,093,187	-4.5	7	656,310	-4.3	3	
Denver	USA	DEN	51,245,334	2.8	10	619,503	0.9	5	
Detroit	USA	DTW	35,135,828	-2.4	24	462,520	-1.0	15	
Frankfurt	DEU	FRA	53,467,450	-1.3	9	485,783	1.4	12	
Houston	USA	IAH	41,709,389	-3.0	16	576,062	-4.6	7	
Las Vegas	USA	LAS	43,208,724	-8.0	15	578,949	-5.0	6	
London	GBR	LHR	67,056,379	-1.5	3	478,518	-0.6	13	
Los Angeles	USA	LAX	59,497,539	-4.7	6	622,506	-8.6	4	
Madrid	ESP	MAD	50,824,435	-2.4	11	469,740	-2.6	14	
Miami	USA	MIA	34,063,531	1.0	29	371,519	-3.8	29	
Minneapolis	USA	MSP	34,056,443	-3.0	30	450,044	-0.7	16	
Munich	DEU	MUC	34,530,593	1.7	27	432,296	0.1	20	
Newark	USA	EWR	35,360,848	-2.8	23	434,428	-0.4	19	
Paris	FRA	CDG	60,874,681	1.6	5	559,816	1.3	8	
Phoenix	USA	PHX	39,891,193	-5.4	17	502,499	-6.8	10	
San Francisco	USA	SFO	37,234,592	4.7	21	387,710	2.2	24	

Each column of the table can be sorted in ascending order by clicking on the word "Select" above the table and choosing, from the drop-down menu, the heading of the column on which you want the table to be sorted.

Consider each of the following statements about these airports. For each statement indicate whether the statement is true or false, based on the information provided in the table.

	True	False	
<input type="radio"/> <input type="radio"/>			The airport experiencing the greatest percent decrease in total passengers from 2007 to 2008 also experienced the greatest decrease in the percent of movements.
<input type="radio"/> <input type="radio"/>			The airport with the median rank based on total number of passengers is the same as the airport with the median rank based on total number of movements.
<input type="radio"/> <input type="radio"/>			Exactly 50% of the airports that experienced an increase in both total number of passengers and in total number of movements are located in the United States (USA).

Integrated reasoning

Did you know? The IR section is *almost* identical to Data Insights on the GMAT

Graphics interpretation

Test takers are asked to interpret a graph or graphical image and select from a drop-down list to make response statements accurate.

Calculator

The graph at the left is a scatter plot with 40 points, each representing the temperature of the ocean water, measured at a fixed location off the coast of West Iceland, and the air temperature, measured on land at a fixed location in West Iceland. Both the water temperature and the air temperature, in degrees Celsius, were measured at noon on Wednesday of each of 40 consecutive weeks last year. The solid line is the regression line and the dashed line is the line through the points (0,0) and (6,6).

Use the drop-down menus to fill in the blanks in each of the following statements based on the information given by the graph.

The relationship between the water temperature and the air temperature is

The slope of the regression line is the slope of the dashed line.

Two-part analysis

A question will involve two components for a solution. Possible answers will be given in a table format with a column for each component and rows with possible options; test takers are asked to consider the options provided.

Calculator

Organization A currently has 1,050 members. Organization B currently has 1,550 members. The number of members of Organization A and the number of members of Organization B are increasing annually, each at its own constant rate. Analysts project that if each of these organizations maintains its constant annual rate of membership increase, five years from now they will for the first time have the same number of members, and in subsequent years Organization A will have more members than Organization B.

In the table below, identify a rate of increase, in members per year, for Organization A and a rate of increase, in members per year, for Organization B that together are consistent with the analysts' projection. Make only one selection in each column.

Organization A	Organization B	Rate of increase (members per year)
<input type="radio"/>	<input type="radio"/>	10
<input type="radio"/>	<input type="radio"/>	30
<input type="radio"/>	<input type="radio"/>	40
<input type="radio"/>	<input type="radio"/>	120
<input type="radio"/>	<input type="radio"/>	130
<input type="radio"/>	<input type="radio"/>	150

Quantitative reasoning

Problem solving

Question:

The price of lunch for 15 people was \$216.00, including a 20 percent gratuity for service.

What was the average price per person, EXCLUDING the gratuity?

- A. \$11.52
- B. \$12.00
- C. \$13.80
- D. \$14.00
- E. \$15.87

Quantitative reasoning

Data sufficiency

Question:

In a certain class, one student is to be selected at random to read. What is the probability that someone under 17 years old will read?

- 1. Two-thirds of the students in the class are under 17 years of age.**
 - 2. Ten of the students in the class are girls.**
-
- A. Statement (1) ALONE is sufficient, but statement (2) alone is not sufficient.
 - B. Statement (2) ALONE is sufficient, but statement (1) is not sufficient.
 - C. BOTH statements TOGETHER are sufficient, but NEITHER statement ALONE is sufficient.
 - D. EACH statement ALONE is sufficient.
 - E. Statements (1) and (2) TOGETHER are not sufficient.

Did you know? Data Sufficiency questions are in the GMAT's Data Insights section.

Verbal reasoning

Sentence correction

Question:

Carnivorous mammals can endure what would otherwise be lethal levels of body heat because they have a heat-exchange network **which kept** the brain from getting too hot.

- A. which kept
- B. that keeps
- C. which has kept
- D. that has been keeping
- E. having kept

Did you know? Sentence correction questions are **not** on the GMAT exam.

Verbal reasoning

In 1988 services moved ahead of manufacturing as the main product of the United States economy. But what is meant by “services”? Some economists define a service as something that is produced and consumed simultaneously, for example, a haircut. The broader, classical definition is that a service is an intangible something that cannot be touched or stored. Yet electronic utilities can store energy, and computer programmers save information electronically. Thus, the classical definition is hard to sustain.

The United States government’s definition is more practical: services are the residual category that includes everything that is not agriculture or industry. Under the definition, services include activities as diverse as engineering and driving a bus. However, besides lacking a strong conceptual framework, this definition fails to recognize the distinction between service industries and service occupations. It categorizes workers based on their company’s final product rather than on the actual work the employees perform.

Thus, the many service workers employed by manufacturers – bookkeepers or janitors, for example – would fall under the industrial rather than the services category. Such ambiguities reveal the arbitrariness of this definition and suggest that, although practical for government purposes, it does not accurately reflect the composition of the current United States economy.

Reading comprehension

Question:

The author of the passage is primarily concerned with:

- A. discussing research data underlying several definitions
- B. arguing for the adoption of a particular definition
- C. exploring definitions of a concept
- D. comparing the advantages of several definitions
- E. clarifying some ambiguous definitions

Verbal reasoning

Critical reasoning

Question:

A city plans to attract new citizens with new housing and new facilities such as parks, recreation centers, and libraries. One component of the city's plan is to require that developers seeking permission to build this new housing provide these additional facilities at no cost to the city.

Which of the following, if true, would point to a possible flaw in the city's plan?

- A. Light, non-polluting industries have located in the area, offering more jobs and better paying jobs than do the more-established industries in the area.
- B. Other towns and cities nearby have yet to embark on any comparable plans to attract new citizens.
- C. Most developers see the extra expense of providing municipal facilities as simply one of the many costs of doing business.
- D. Developers would pass along their costs to the buyers, thereby raising the cost of housing units beyond the ability of likely purchasers to afford them.
- E. Studies show that purchasers of new houses, especially first-time buyers, ran recreational resources as an important factor in deciding to buy a particular house.

Start accepting EA from candidates

Please send the following to your GMAC representative to get started:

- 1 List of program(s) that will be accepting EA with hyperlink(s)**
- 2 School logo**
- 3 Person who will be the EA score site Administrator**
 - ✓ Name
 - ✓ Email address
 - ✓ Must have a gmac.com account